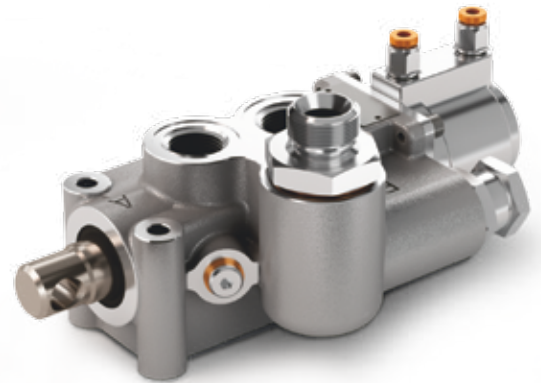


CODICE DI ORDINAZIONE / ORDERING CODE

## D150 P P XX X XX

**00** = NESSUN OPTIONAL / NO OPTIONAL  
**01** = MONTAGGIO A SERBATOIO / TANK MOUNTING  
 RACCORDO D'ENTRATA / INLET GAUGE  
**4** = 3/4" GAS (ATTACCO FEMMINA / FEMALE PORT)  
**5** = 3/4" GAS MASCHIO STANDARD / MALE STANDARD  
**6** = 1" GAS (ATTACCO FEMMINA / FEMALE PORT)  
**7** = 1" GAS (ATTACCO MASCHIO / MALE PORT)  
 TARATURA VALVOLA MASSIMA PRESSIONE / PRESSURE RELIEF VALVE SETTING  
 10 ÷ 22 MPA (100-220 BAR)  
 22 ÷ 35 MPA (220-350 BAR)  
 DISCESA PROGRESSIVA / PROGRESSIVE LOWERING  
 COMANDO PNEUMATICO / PNEUMATIC CONTROL  
 MODELLO / MODEL



**DM 150 P**

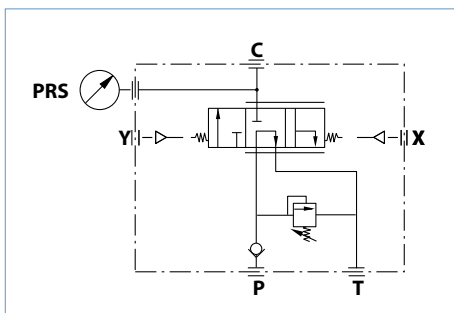
5

CARATTERISTICHE TECNICHE / TECHNICAL SPECIFICATIONS

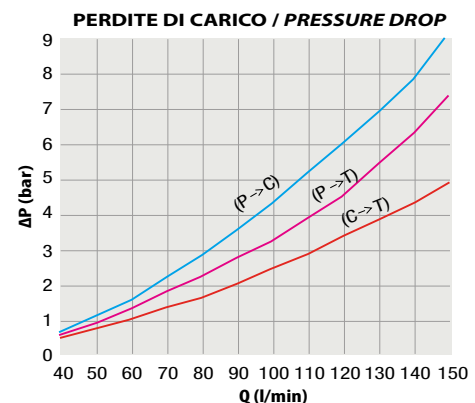
|  |           |   |                |
|--|-----------|---|----------------|
| Portata nominale<br>Flow rate                            | 150 l/min | Temperatura fluido °C (t)<br>Fluid temperature °C (t) | -25° + 80°C    |
| Pressione massima di lavoro<br>Max working pressure      | 250 bar   | Campo viscosità<br>Viscosity range                    | 12-100 cSt     |
| Pressione massima di picco (<0.1 s)<br>Max peak pressure | 300 bar   | Filtrazione / Filtering<br>ISO 4406 βx=75             | 20/17<br>25 μm |
| Pressione massima sul T<br>T port max pressure           | 30 bar    | Peso<br>Weight  | 5.8 kg         |
| Pressione pneumatica massima<br>Max pneumatic pressure   | 12 bar    | Fluido olio minerale<br>Mineral oil                   | ISO VG 46      |

- Distributore da 150 l/min a comando pneumatico, per veicoli ribaltabili con sola motrice.
- Consente la salita, la discesa veloce e la discesa progressiva con comando pneumatico proporzionale.
- Sono incorporate la valvola di ritegno in ingresso e la valvola di massima pressione regolabile a richiesta 140-250 bar.
- Flangiabile a telaio.
- Attacco manometro o pressostato.

- Pneumatic operated 150 l/min distributor, for tippers without trailer.
- It performs tipping, fast lowering or progressive lowering by means of progressive pneumatic control.
- It includes inlet check valve and adjustable relief valve. The relief valve range is upon request from 140 to 250 bar.
- Flange connection to chassis.
- Upon manometer or pressure switch gauge.



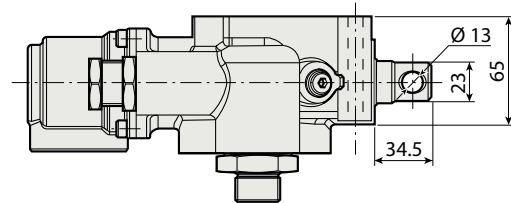
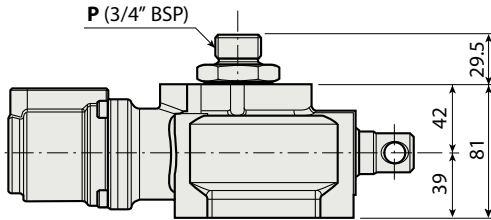
mod. DM 150 P



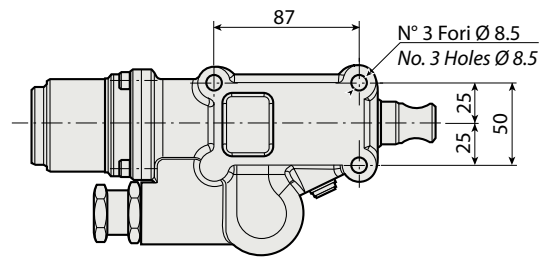
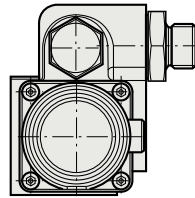
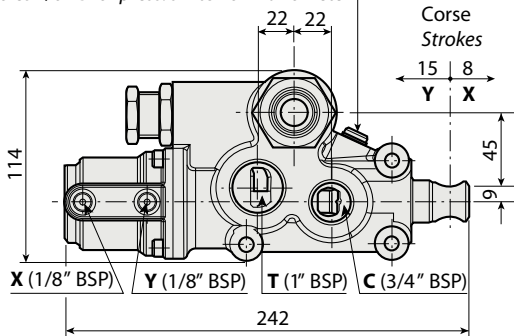
RILIEVI ESEGUITI CON OLIO ISO VG 46 A 50° C (ν<sub>7</sub> = 30 cSt)  
THE ABOVE SPECIFICATIONS REFER TO OIL TYPE ISO VG 46 AT 50° C (ν<sub>7</sub> = 30 cSt)

VERSIONE STANDARD / STANDARD VERSION  
mod. DM 150 P

C = Cilindro / Cylinder    X = Salita / Tipping  
P = Pompa / Pump        Y = Discesa / Lowering  
T = Serbatoio / Tank



Foro 1/8" G per pressostato o manometro  
Holes 1/8" G for press. switch or manometer



5

PRESSOSTATO A RICHIESTA / UPON REQUEST PRESSURE SWITCH

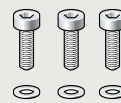
Coppia di serraggio / Tightening torque: 30 ± 5 Nm

Pressostato 3 bar per pressioni di lavoro < 160 bar  
Pressure switch at 3 bar for working pressure < 160 bar      COD. 501PRS163A1

Pressostato 7 bar per pressioni di lavoro > 160 bar  
Pressure switch at 7 bar for working pressure > 160 bar      COD. 501PRS357A1

KIT PER FISSAGGIO AL TELAIO / CHASSIS MOUNTING KIT

M8x80



Serrare a coppia max 20 Nm ± 5  
Tightening torque max 20 Nm ± 5

Montare con frenafletti 243  
Assembly using threadlocker 243

COD. 30KFD004000

CAMPI DI REGOLAZIONE VALVOLA DI MASSIMA  
ADJUSTMENT RANGES FOR RELIEF VALVE

140 ÷ 240 bar

240 ÷ 350 bar

KIT GUARNIZIONI / SEALS KIT

COD. 39200028000