

# UFM 051

## Mobile filtration unit



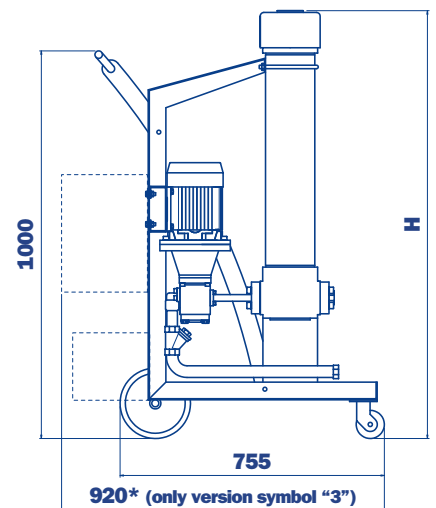
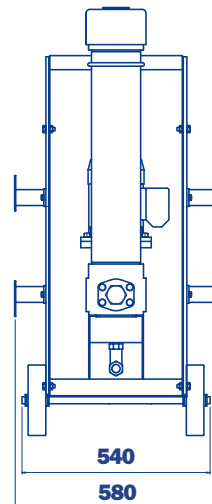
Available in three configurations

- A configuration with start / stop differential pressure indicator - visual
- B configuration with start / stop automatic motor cut-out from differential pressure indicator - electrical/visual
- C configuration with start / stop phase inverter automatic motor cut-out from differential pressure indicator - electrical/visual  
In Line Particle Counter ICM

UFM 051 mobile filtration units suitable for filling and refilling of filtered hydraulic fluids and lubrication tanks.

The filter unit connected to off-line to the tank (recommended maximum volume of 500/750 L.), can be used as a support to the filtration plant on start-up for fast flushing action, either as additional filtration systems with a high incidence of contamination.

Continued use is recommended for the version with three phase electric motor.



### UFM 051

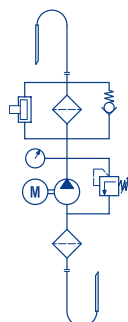
Length filter body  
(see ordering information)

Length Filter	H mm
5	1230 Standard
6	1530 Special

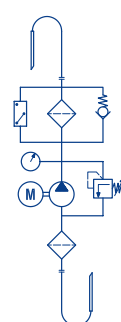
- **Compact size**
- **Continue Operation Pressure 10 bar**
- **Easy to use**
- **Easy maintenance**
- **Reliable**
- **Absolute filtration**
- **In Line Contamination Monitor**

## Symbols (see ordering information)

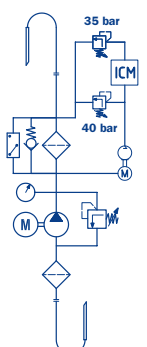
"0"  
Symbol



"1"  
Symbol



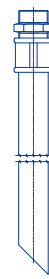
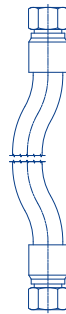
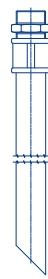
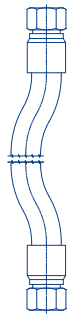
"3"  
Symbol



### Technical data

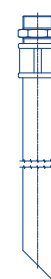
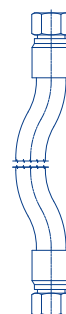
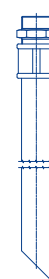
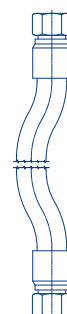
	Without "ICM"	With "ICM"
<b>Pump</b>	Gear pump	Gear pump
<b>Electric Motor</b>	1,5 Kw 230 Volt single phase electric motor 1,5 Kw 400/230 Volt three phase electric motor	- 1,5 Kw 400/230 Volt three phase electric motor
<b>Flow (l/min)</b>	50 l/min - 1450 r.p.m.	40 l/min - 1450 r.p.m.
<b>Max. Operation Pressure</b>	10 bar	10 bar
<b>Viscosity range</b>	Min. operation 10 cSt Max. operation 300 cSt Max. only for cold start 800 cSt	Min. operation 10 cSt Max. operation 300 cSt Max. only for cold start 800 cSt
<b>Suction Filter</b>	Type Y filtration 400 µm	Type Y filtration 400 µm
<b>Fluid Temperature</b>	From -10° to +80° C	From -10° to +80° C
<b>Ambient Temperature</b>	From -20° to +45° C	From -20° to +45° C
<b>Protection Class</b>	IP 55	IP 55
<b>Seal</b>	NBR	NBR
<b>Fluid Compatibility</b>	Mineral Oil & Sintetic Oil - Other on request	Mineral Oil & Sintetic Oil - Other on request
<b>Weight</b>	70 kg.	70 kg.
<b>Equipment</b>	<ul style="list-style-type: none"> <li>• Differential Clogging indicator - Visual</li> <li>• Differential Clogging indicator - Electrical/Visual</li> <li>• -</li> </ul>	<ul style="list-style-type: none"> <li>• -</li> <li>• Differential Clogging indicator - Electrical/Visual</li> <li>• In line Particle Counter ICM + Differential Clogging indicator - Electrical/Visual</li> </ul>

#### Hoses



**Suction hose**  
DN32 length 3000 mm.  
**Lance**  
DN40 length 700 mm.

**Pressure hose**  
DN25 length 3000 mm.  
**Lance**  
DN30 length 700 mm.



**Suction hose**  
DN25 length 3000 mm.  
**Lance**  
DN30 length 700 mm.

**Pressure hose**  
DN25 length 3000 mm.  
**Lance**  
DN30 length 700 mm.

#### Bypass options - 2 Housing spigot included



Housing spigot  
No bypass



Housing spigot  
Bypass 3,5 bar

### Ordering information - Filter element

#### Length 5 Standard

##### Filter element

Absolute filtration inorganic microfibre	$\beta_{x@} \geq 1000$	Wire mesh element	Nominal filtration
CU 400 5 A01 A N P01	<4	CU 400 5 M25 A N P01	25 $\mu\text{m}$
CU 400 5 A03 A N P01	5	CU 400 5 M60 A N P01	60 $\mu\text{m}$
CU 400 5 A06 A N P01	7		
CU 400 5 A10 A N P01	10		
CU 400 5 A16 A N P01	15		
CU 400 5 A25 A N P01	20		

#### Length 6 Special

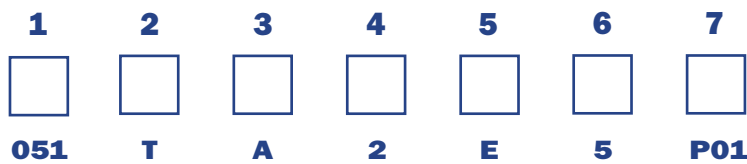
##### Filter element

Absolute filtration inorganic microfibre	$\beta_{x@} \geq 1000$	Wire mesh element	Nominal filtration
CU 400 6 A01 A N P01	<4	CU 400 6 M25 A N P01	25 $\mu\text{m}$
CU 400 6 A03 A N P01	5	CU 400 6 M60 A N P01	60 $\mu\text{m}$
CU 400 6 A06 A N P01	7		
CU 400 6 A10 A N P01	10		
CU 400 6 A16 A N P01	15		
CU 400 6 A25 A N P01	20		

### Ordering information

# UFM

Example: UFM



#### 1 - Flow

**051** 50 l/min

#### 2 - Electric motor

**M** Single phase 220 V  
**T** Three phase 380 V

#### 3 - Seals

**A** NBR

#### 4 - Automatic motor cut-out from differential pressure indicator

**0** Without  
**1** With  
**3** Automatic motor cut-out from differential pressure indicator  
Phase inverter  
ICM Contamination Monitor  
Only with electric motor three phase  
Flow rate 40 l/min

#### 5 - Filter elements

**S** Without element

#### 6 - Length filter body

**5** Standard  
**6** Special

#### 7 - Option

**P01** Standard MP Filtri

Filtration elements should be ordered separately